



from **\$658,489**

KENWOOD 20

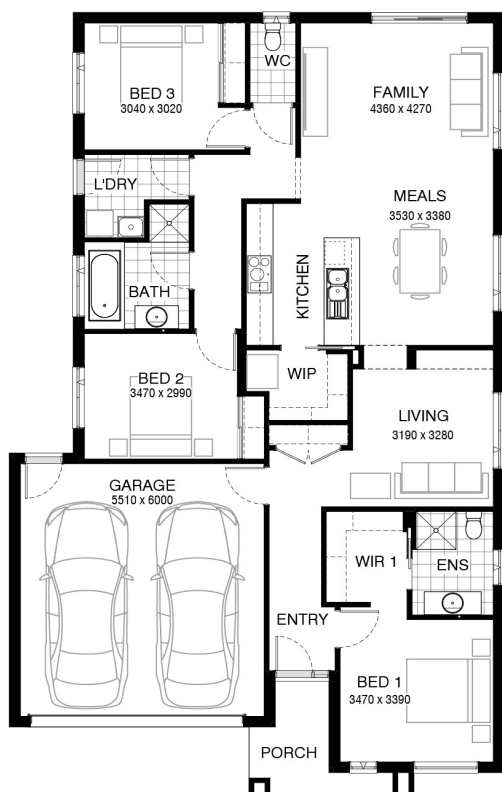
Santa Monica facade

Home size : 19.54 SQ

3 2 2 375 sqm

Lot 212 Grevillea Court, Lara (Flinders Walk)

- Site Costs Including Rock Assurance
- Council and Developer Requirements
- 12 Month Price Freeze With Option To Extend
- Quality Assured With Our 30-Year Structural Guarantee
- Multiple Floorplan Options Available
- Choice of Facade



Corey Cox

0427 031 129

corey.cox@burbank.com.au
www.burbank.com.au

