



SABA 250

\$665,000

Lot 339 Reflections Crescent, 'Lara Lakes'

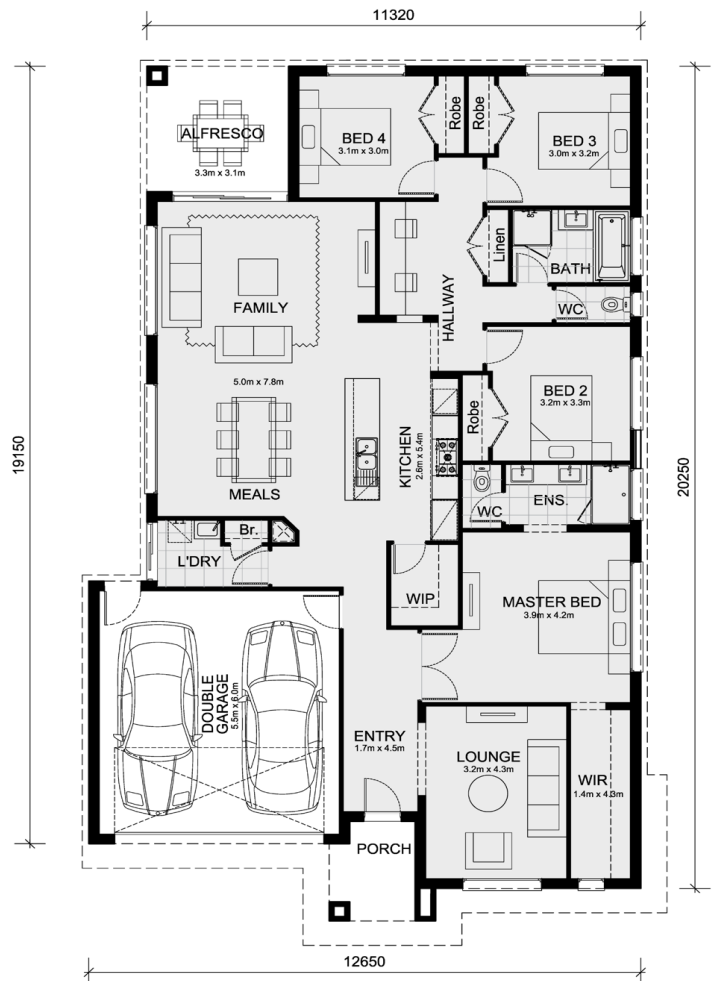
4  2  2 

Mimosa Homes Proudly Presents

The Saba 250 House and Land Package!
 * Experience The Mimosa Homes Difference!
 * Mimosa Homes Added Value Inclusions:

- Inclusive of site costs & connections with H1 class slab as per standard inclusions!
- Range of facades including feature render!
- Quality floor coverings throughout entire home!
- Higher ceilings 2550mm!
- Downlights to living areas!
- Stone bench top to kitchen!
- 900mm S/S upright oven and cook top with S/S canopy rangehood!
- Stainless steel Dishwasher and Microwave with trim kit!
- Overhead cupboards & wine rack! (Design specific)
- Remote control panel sectional lift garage door!
- 6 star energy with solar hot water!
- Flexible floor plans & so much more!

CALL BUILDER DIRECT!



Area Details

Land Size 448sqm Building Size 232sqm

Contact: Nirav Patel
 nirav@mimosahomes.com.au

0468463103
 www.mimosahomes.com.au