



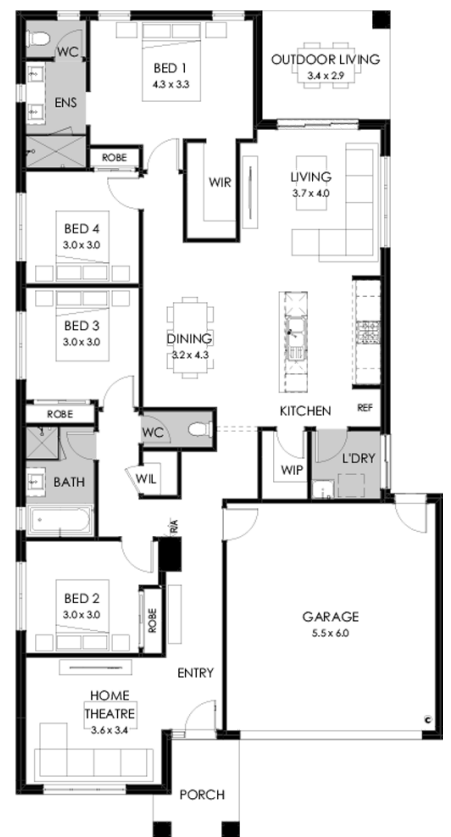
# Liberty 23

Package from **\$607,200**

Lot 501 Brickwell Place, Corio- Wattle Grove  
 Land size: 459m2



- Stunning façade included
- Double glazing (including sliding doors)
- Quality floor coverings throughout
- 2550mm high ceilings to ground floor
- LED downlights to entry, kitchen and living
- Soft closers to all Kitchen, Laundry, vanity drawers and doors
- ILVE 900mm wide oven, cooktop and rangehood
- 40mm Caesarstone kitchen benchtops
- 20mm Caesarstone to bathroom benchtops
- Quality Caroma basins and tapware
- Overhead cupboards adjacent to rangehood
- Tiled splashback
- 25 Year Structural Guarantee
- 12 Year Maintenance



Call Dale Bennett 0421 543 466  
 Or email [dbennett@boutiquehomes.com.au](mailto:dbennett@boutiquehomes.com.au)  
[boutiquehomes.com.au](http://boutiquehomes.com.au)



Image used is an artist impression for illustrative purposes only and may show decorative items not included in the price. Further terms and conditions apply to this offer including with respect to the price, for the full terms and conditions please visit <http://www.boutiquehomes.com.au/disclaimer>.