



## Ashley 24

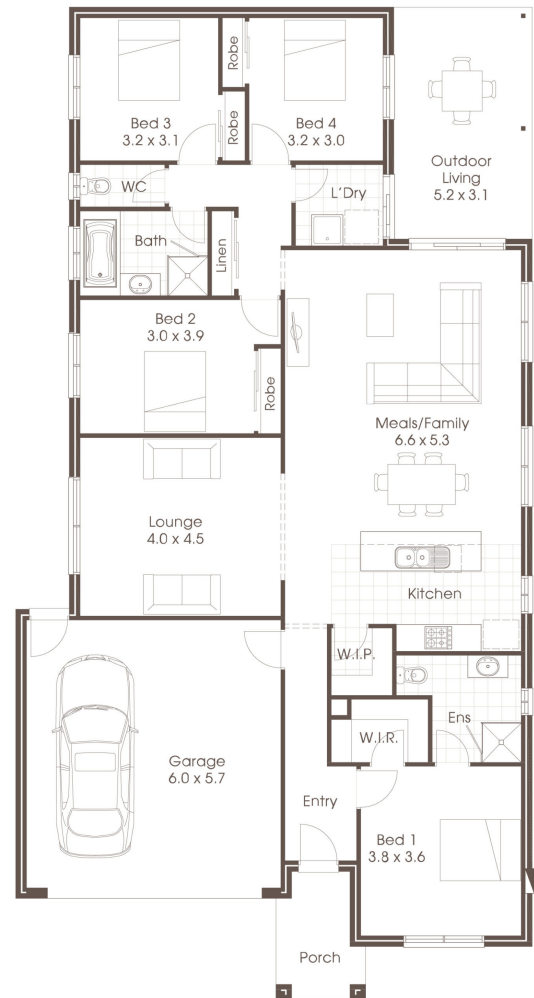
### HOUSE & LAND PACKAGE

🍷 | 4    🚿 | 2    🚗 | 2

Address **Lot No: 114**  
**Address: Montview Court, Corio**  
**Lot Size: 512<sup>m2</sup>**

Price **\$554,960**

- Located in Wattle Grove Estate, Corio
- Stone benchtops to kitchen
- Ducted heating and cooling
- 3 coat paint system
- Quality floor coverings throughout
- Concrete driveway and alfresco
- Fencing by developer



For further information contact Cavalier Homes

**Nathan Downing**  
**0400 040 795**

Cavalier Homes Registered Builders in Geelong CDB-U 58723 (VIC)  
 Each office is independently owned and operated. Room sizes shown are approximate only, please refer to final working drawings for actual sizes. Plans are protected by copyright. Prices, inclusions and plans are subject to variation without notice. Display/show home designs and inclusions vary throughout Australia and New Zealand and are provided as a guide only. Please refer to your building contract for the specific design and inclusion details of your new home.  
 \*Conditions Apply. Contact us for all information regarding the inclusions. Site allowances subject to soil reports & Engineering report. This information sheet is a guide only.