



Price excludes: Fencing, Landscaping, Concrete pavers, Planter boxes, Decking

\$499,370*

LOT 113, MONTVIEW COURT
WATTLE GROVE ESTATE
CORIO

SULLIVAN 17
ASPIRE FACADE

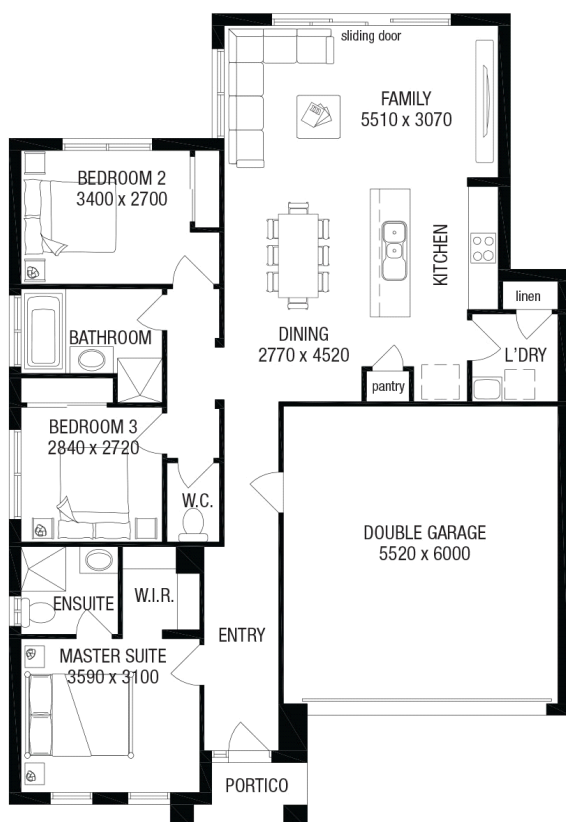
BLOCK SIZE | 403M²



PACKAGE INCLUDES:

THE SULLIVAN 17 WITH ASPIRE FACADE BUILT TO OUR INDUSTRY LEADING BASE SPECIFICATIONS AND LAND, PLUS:

- ✓ Lifetime structural guarantee#
- ✓ 20mm stone benchtop to Kitchen
- ✓ Large 900mm wide stainless steel appliances
- ✓ Laminate overhead kitchen cupboards (2 sets)
- ✓ Concrete driveway and path (up to 35m²)
- ✓ Fibre optic package
- ✓ Choice of stylish basins to ensuite/bathroom
- ✓ Laminate timber flooring to entry, dining, kitchen & family areas[^]
- ✓ Carpet to all remaining areas (excluding wet areas)[^]
- ✓ Personalised colour selection with an interior designer
- ✓ 90 days maintenance period
- ✓ 3 coat paint system to walls and ceiling



1300 METRICON |
www.metricon.com.au

FREEDOM

m
metricon

*Home and Land Package price correct at time of printing and subject to change without notice. Package price excludes external lighting, telephone service, customer account opening fees, stamp duty on land, legal fees and conveyancing costs including titles and property report. See your Metricon new home advisor for full details of standard inclusions. Land supplied by developer. Land prices and availability are subject to change without notice. All home & land packages are subject to developer approval. #For details on our Lifetime structural guarantee visit metricon.com.au/terms/structuralguarantee. Newfield Real Estate Pty Ltd ACN 159 312 722, Licence number 028051L. VIC Builder's Licence: CDB-U 52967 +Typical site cost allowance included in the price. Additional site costs may apply if site survey and soil tests indicate the presence of fill or more than 300mm of land fall or presence of rock above the typical site allowance made. Package Printed Date: 09/02/2021 Price Region: Geelong