



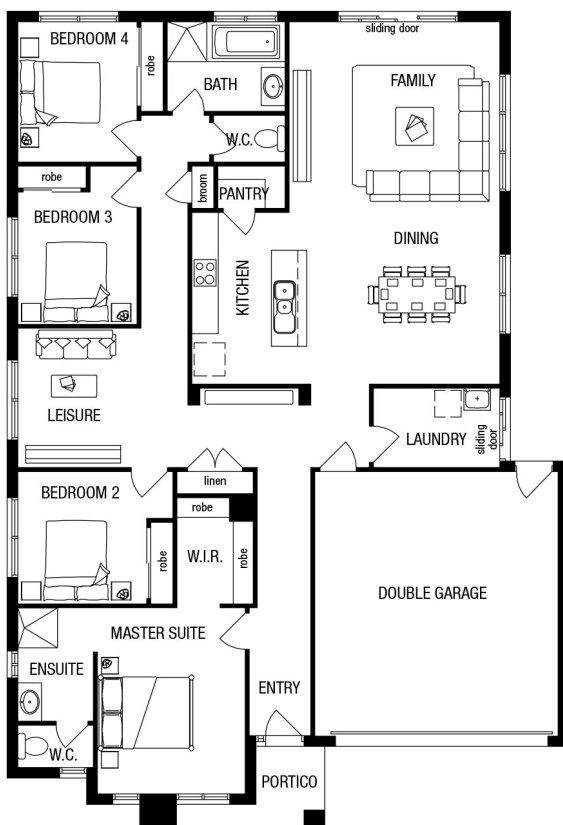
Price excludes: Fencing, Landscaping, Concrete pavers, Planter boxes, Decking

\$532,560*

LOT 112, MONTVIEW COURT
WATTLE GROVE ESTATE
CORIO

PATTERSON 23
YALE FACADE

BLOCK SIZE | 471M²



PACKAGE INCLUDES:

THE PATTERSON 23 WITH YALE FACADE BUILT TO OUR INDUSTRY LEADING BASE SPECIFICATIONS AND LAND, PLUS:

- ✓ Luxury Inclusions
- ✓ Lifetime structural guarantee#
- ✓ 20mm stone benchtop to Kitchen
- ✓ Large 900mm wide stainless steel appliances
- ✓ 2550mm high ceilings
- ✓ Concrete driveway and path (up to 35m²)
- ✓ Fibre optic package
- ✓ Tiled shower base to bathroom and ensuite
- ✓ Stone Benchtops to kitchen, ensuite and bathroom
- ✓ Personalised colour selection with an interior designer
- ✓ 2430mm high internal flush panel doors to ground floor.
- ✓ Stunning Facade included



1300 METRICON |
www.metricon.com.au

FREEDOM

m
metricon

*Home and Land Package price correct at time of printing and subject to change without notice. Package price excludes external lighting, telephone service, customer account opening fees, stamp duty on land, legal fees and conveyancing costs including titles and property report. See your Metricon new home advisor for full details of standard inclusions. Land supplied by developer. Land prices and availability are subject to change without notice. All home & land packages are subject to developer approval. #For details on our Lifetime structural guarantee visit metricon.com.au/terms/structuralguarantee. Newfield Real Estate Pty Ltd ACN 159 312 722, Licence number 028051L. VIC Builder's Licence: CDB-U 52967 +Typical site cost allowance included in the price. Additional site costs may apply if site survey and soil tests indicate the presence of fill or more than 300mm of land fall or presence of rock above the typical site allowance made. Package Printed Date: 04/08/2020 Price Region: Geelong