



From

\$595,118*

Austin 262

Facade: Zen
House: 28.25 sqm
Land: 631 sqm

4 beds 2 baths 3 sofas 0 dining tables 2 cars

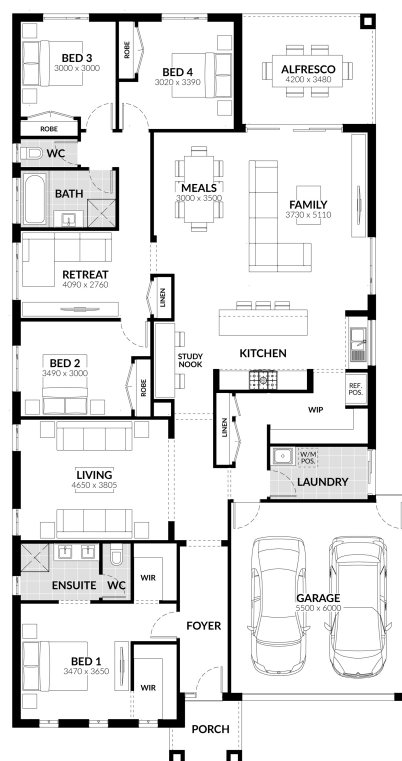
Wattle Grove Estate



Lot 118
Montview Court
Corio

Inclusions

- Spacious Meals and Family Area
- 900mm Westinghouse Rangehood & Upright Cooker
- Gas Ducted Heating
- Solar Hot Water System
- Overhead Cupboard to Kitchen
- Double Vanity to Ensuite
- Professional Colour Consultation
- Sectional Garage Door
- Alfresco
- Colorbond Roof
- 6 Star Energy Rating
- Bushfire Attack Level 12.5 Included
- BlueScope Steel House Frame
- 50 Year Structural Guarantee
- Concrete Driveway up to 30sqm
- Floor Coverings
- NBN Fibre Package



For more information contact:

Megan Fernandez
Tel: 1300 545 464
Email: houseandland@jgking.com.au
www.jgkinghomes.com.au

*JG King reserves the right to withdraw or alter the prices at any time without notice. Package price is based on standard floorplan and builders preferred siting. Packages are subject to developer approval and availability. Images are for illustration purposes only, may depict fixtures and finishes either no longer supplied or above standard design specification. Namely decorative lights, window furnishings, external cladding, facades and landscaping such as planter boxes and fencing. Site costs are based on allowances only unless stated otherwise. For full terms and conditions on 50 year structural warranty visit www.bluescopesteel.com.au/warranties. Speak to a JG King Representative for more information. JG King Pty Ltd (T/A JG King Homes) ABN 21 006 627 210 Registered Building Practitioner licence CDBU 49366 Published 23/08/2019