



From

# \$472,323\*

## Paradise 170

Facade: Starlet  
House: 18.25 sqm  
Land: 484 sqm

3 Beds 2 Baths 1 Living Area 0 Dishes 2 Car Spaces

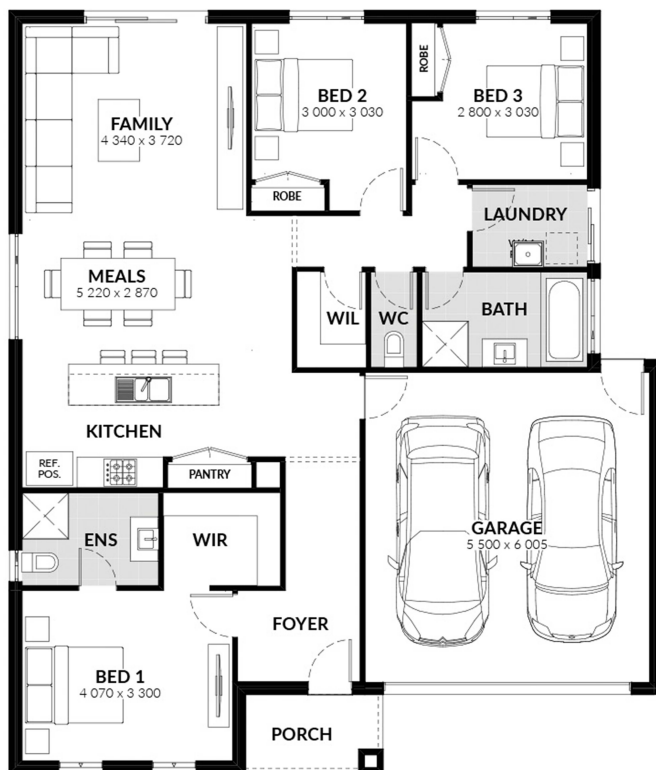
### Wattle Grove Estate



Lot 109  
Montview Court  
Corio

### Inclusions

- Spacious Meals and Family Area
- Stainless Steel 600mm Appliances
- Solar Hot Water System
- Chrome finish leversets
- Sectional Garage Door
- Colorbond Roof
- 6 Star Energy Rating
- Bushfire Attack Level 12.5 Included
- Bluescope Steel House Frame
- 50 Year Structural Guarantee
- Kitchen Upgrade
- Concrete Driveway up to 30sqm
- NBN Fibre Package
- Floor Coverings



For more information contact:

**Megan Fernandez**  
Tel: 1300 545 464  
Email: [houseandland@jgking.com.au](mailto:houseandland@jgking.com.au)  
[www.jgkinghomes.com.au](http://www.jgkinghomes.com.au)

\*JG King reserves the right to withdraw or alter the prices at any time without notice. Package price is based on standard floorplan and builders preferred siting. Packages are subject to developer approval and availability. Images are for illustration purposes only, may depict fixtures and finishes either no longer supplied or above standard design specification. Namely decorative lights, window furnishings, external cladding, facades and landscaping such as planter boxes and fencing. Site costs are based on allowances only unless stated otherwise. For full terms and conditions on 50 year structural warranty visit [www.bluescopesteel.com.au/warranties](http://www.bluescopesteel.com.au/warranties). Speak to a JG King Representative for more information. JG King Pty Ltd (T/A JG King Homes) ABN 21 006 627 210 Registered Building Practitioner licence CDBU 49366 Published 23/08/2019