



## Ashley 24

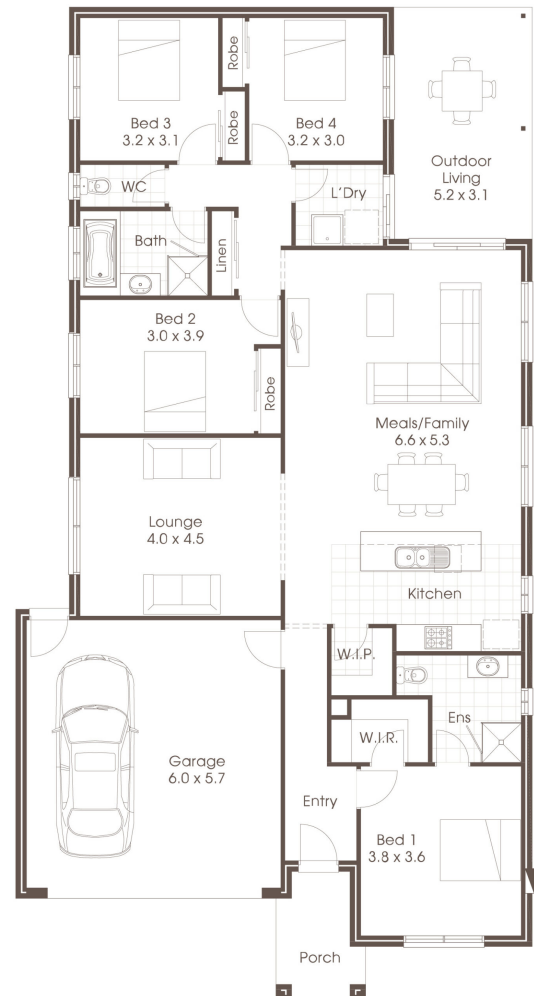
### HOUSE & LAND PACKAGE

🏠 | 4    🚿 | 2    🚗 | 2

Address **Lot No: 106**  
**Address: Wattle Grove Estate, Corio**  
**Lot Size: 448<sup>m2</sup>**

Price **\$523,750**

- Stone bench tops
- Quality Flooring
- 3 coat paint system
- Ducted Air
- Provided by Developer
- Fencing
- \$1000 solar power rebate



For further information contact Cavalier Homes  
**Geelong**  
**03 5832 6228**

Cavalier Homes Registered Builders in Geelong CDB-U 58723 (VIC)  
 Each office is independently owned and operated. Room sizes shown are approximate only, please refer to final working drawings for actual sizes. Plans are protected by copyright. Prices, inclusions and plans are subject to variation without notice. Display/show home designs and inclusions vary throughout Australia and New Zealand and are provided as a guide only. Please refer to your building contract for the specific design and inclusion details of your new home.  
 \*Conditions Apply. Contact us for all information regarding the inclusions. Site allowances subject to soil reports & Engineering report. This information sheet is a guide only.