



FIXED PRICE HOME AND LAND

Images shown are for illustrative purposes only and may not represent the final product such as lighting, window furnishings, timber look garage door & timber windows. Façade details including entry door and window sizing may vary between house types. Pricing also excludes features such as fencing, landscaping, letterbox, decking, driveway and any notable features of the façade. Please speak with your sales consultant for further details.

LOT 12, Apple Gum Estate, Lara (400M2)

FLOOR PLAN: Burnet 18_172
FACADE: Autumn

\$465,079

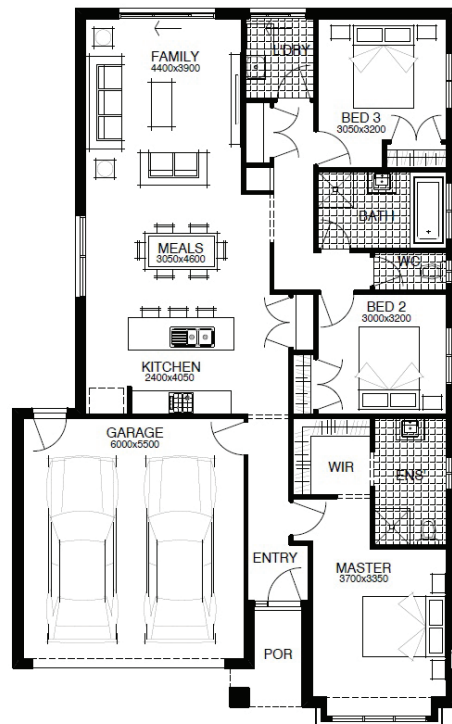
FIRST HOME OWNERS PRICE \$455,079

WELLNESS LIVES HERE
You should too.

PACKAGE INCLUSIONS:

- ▶ LIFETIME STRUCTURAL GUARANTEE
- ▶ DEVELOPER & COUNCIL REQs
- ▶ 450MM EAVES TO FACADE
- ▶ KEYED WINDOW LOCKS TO ALL OPENABLE WINDOWS
- ▶ 3 COAT PAINT APPLICATION
- ▶ SECTIONAL LIFT GARAGE DOOR
- ▶ TILED SHOWER BASE
- ▶ FINANCE SOLUTIONS AVAILABLE
- ▶ ... AND MUCH MORE!

3 2 2 1 18sq



For enquiries please contact:
Bruno Esposti
0435219103
simondsxpress.com.au

VIC
Metro West
bruno.esposti@simonds.com.au



Photographs in this brochure are for illustration purposes only and may depict external building materials that are not permitted pursuant the restrictions contained in proposed plan of subdivision (including, but not limited to, the memorandum of common provisions) and the restrictive covenant (instrument no. F231341) currently registered on the parent title (restrictive covenant).

The photographs do no constitute a representation by the vendor (or its employees/agents/consultants) in respect to permitted external building materials in any manner.

The vendor is endeavouring to remove the restrictive covenant from the parent title, however, in the event that it is not removed, Purchasers purchase a lot subject to the restrictive covenant.

Purchasers should not rely on the photographs in any way, and must make and rely on their own enquires.

Bisinella
the key to your community

bisinella.com.au

Bisinella Head Office
Email sales@bisinella.com.au